

# An Easy Way To Make Photoshop Styles

By Lavica

## Tutorial 4

In the last tutorial I showed you an easy way to make Photoshop shapes, if you had no problems with that then you should find this tutorial equally as easy. Really this is a two in one tutorial because as well learning how to make your own styles you will also learn how to make and save preset patterns as well.

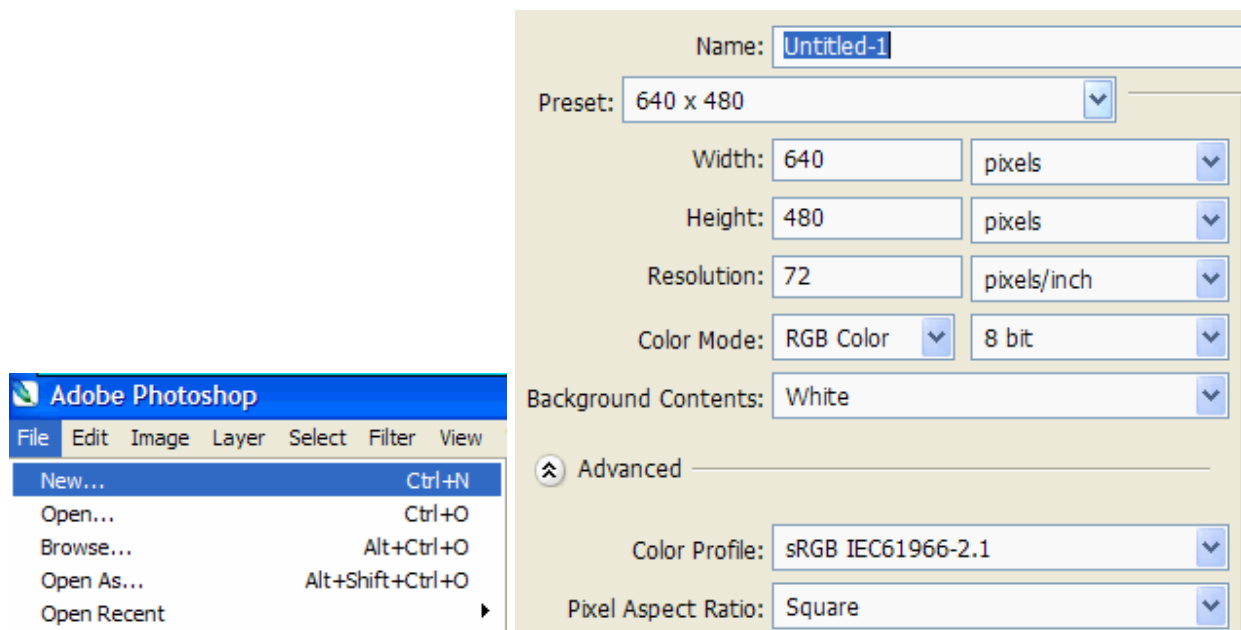
### What you will need:

Any version of Adobe Photoshop from 7 through to CS3.

A few images of patterns or textures you like and want to experiment with.

### Step 1

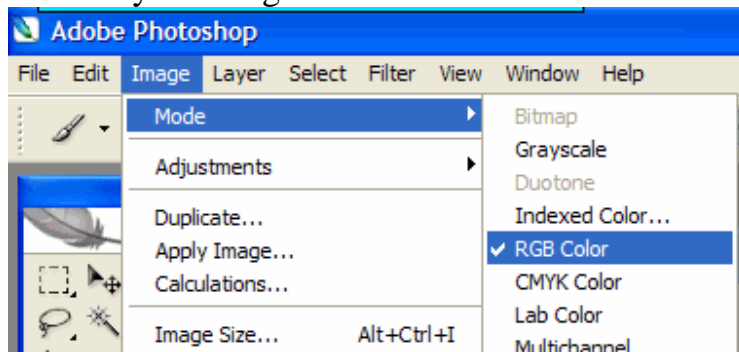
Open up Photoshop and make a blank image about 640 x 480 for ease of view as below.



Next open the image of the pattern or texture you would like to use on your style.

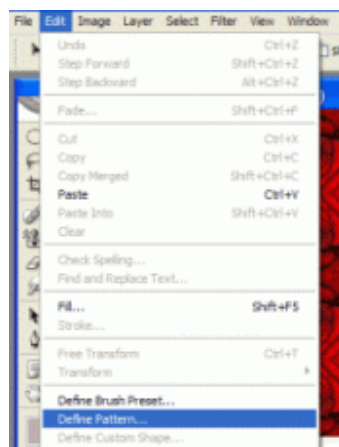


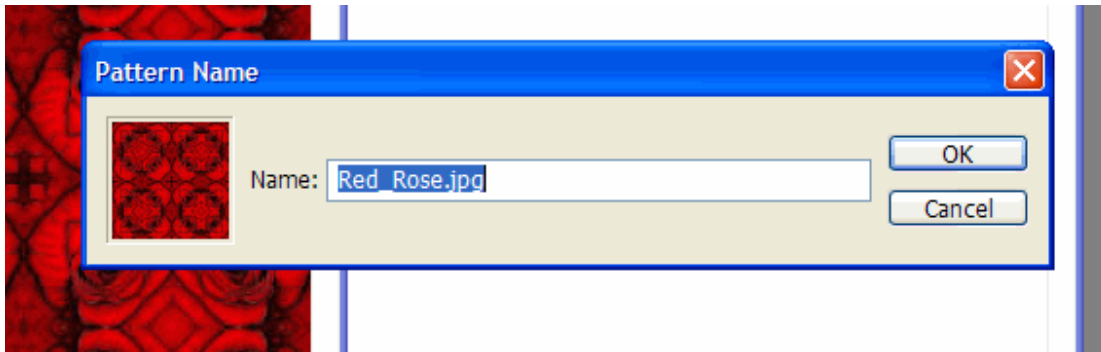
Make sure your image is in RGB mode as shown below.



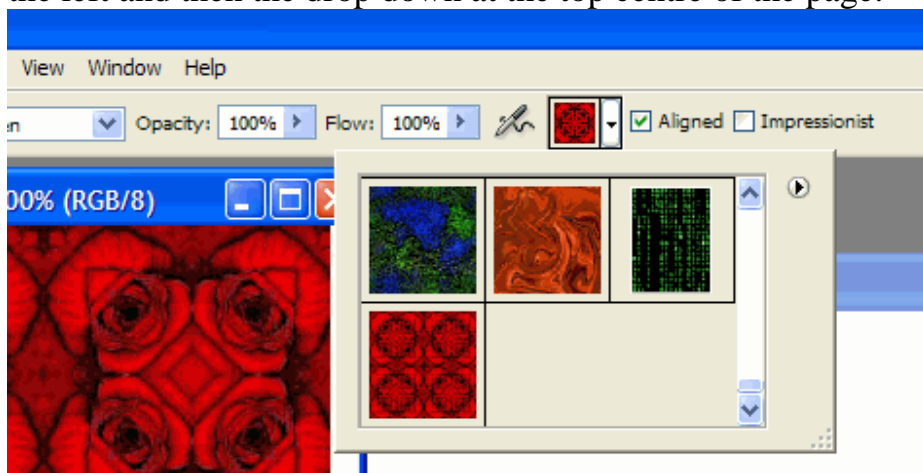
## Step 2

Click anywhere on the pattern or texture to make sure it is selected. Then go to **Edit** at the top of the page, click on **Edit** and then click on **Define Pattern** as shown below. This will put your chosen image into your Adobe preset patterns so you can use it in your work, you will now be given an option to save it with the name of your choice, then click **OK** to save to your preset pattern collection.





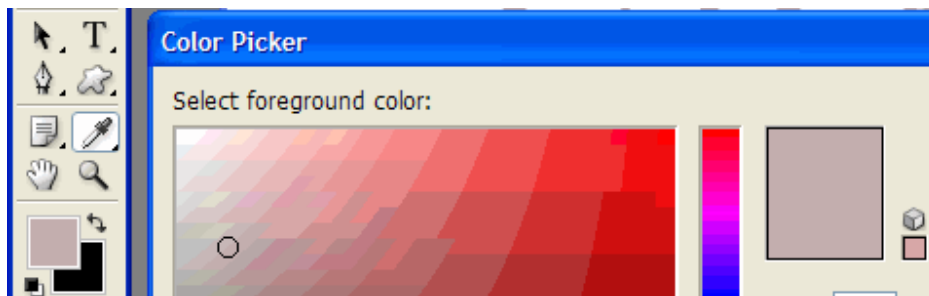
You will now see that pattern amongst your others if you select patterns from your toolbar on the left and then the drop down at the top centre of the page.

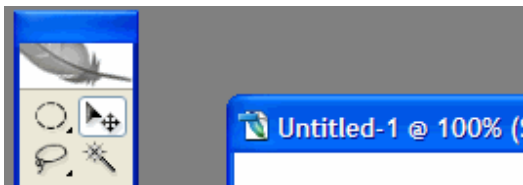
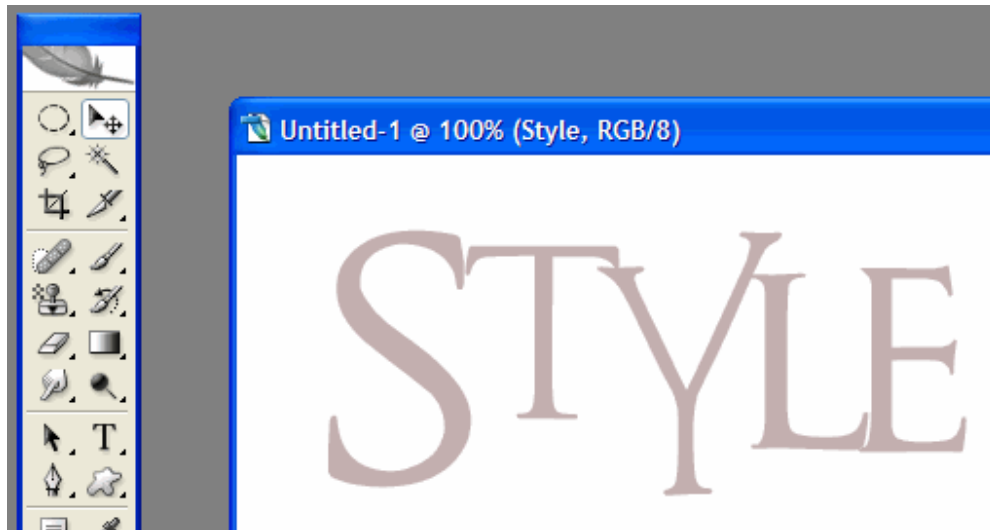


### Step 3

Now close the pattern/texture image as you don't need it now as you've already saved it to your Adobe patterns. If it asks you to save before closing choose the **No** option.

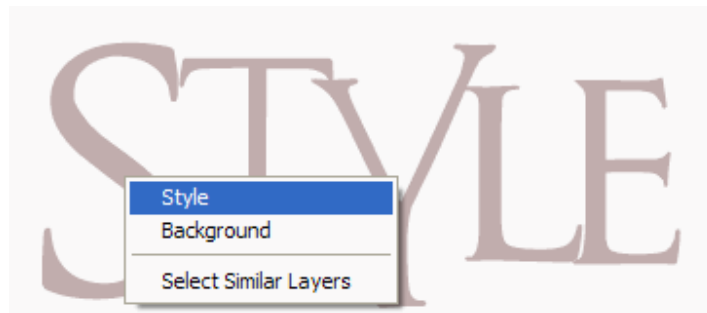
Next on your left hand toolbar select the **Text** tool and write some text of your choosing – one word is enough and make it a nice large visible size I used 72 pt but you will have to experiment depending on what font you use. Use a **light colour** for the text.





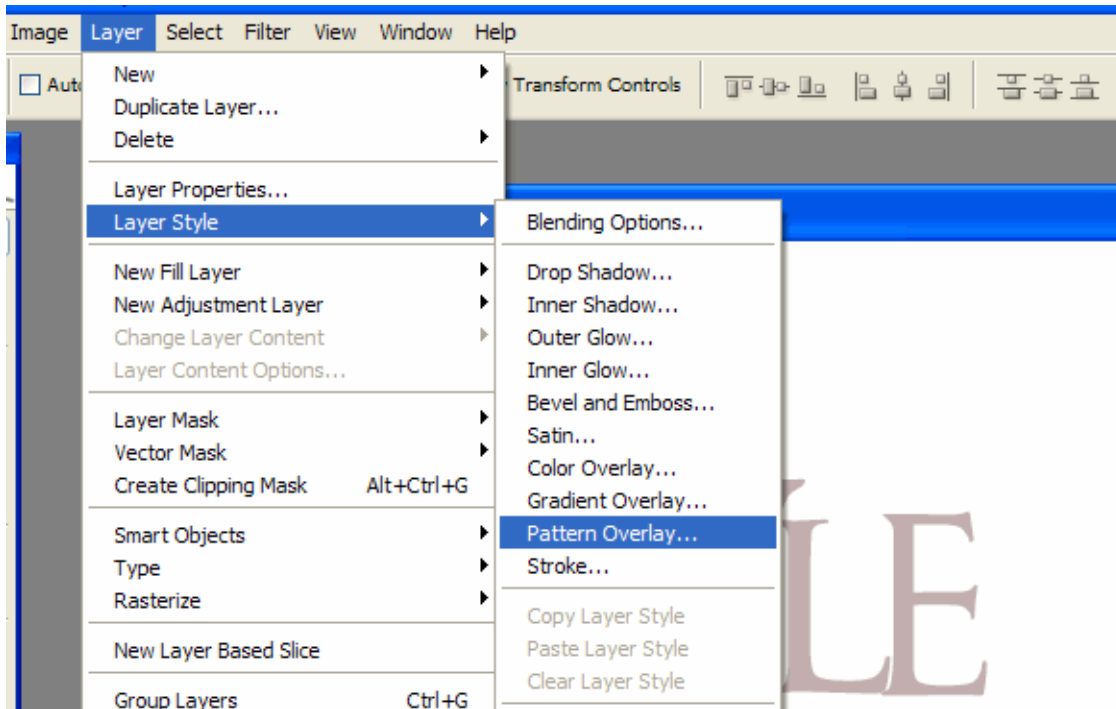
Click on to the **Move** tool again.

You can now move and drag the text around the page to a position that suits you but first make sure the text **layer** is actually the layer you have selected to work on, you can do this by **right clicking on the text** and then select whatever the name of your text layer is, I wrote the word **Style** so that is what my layer was automatically named – see below.

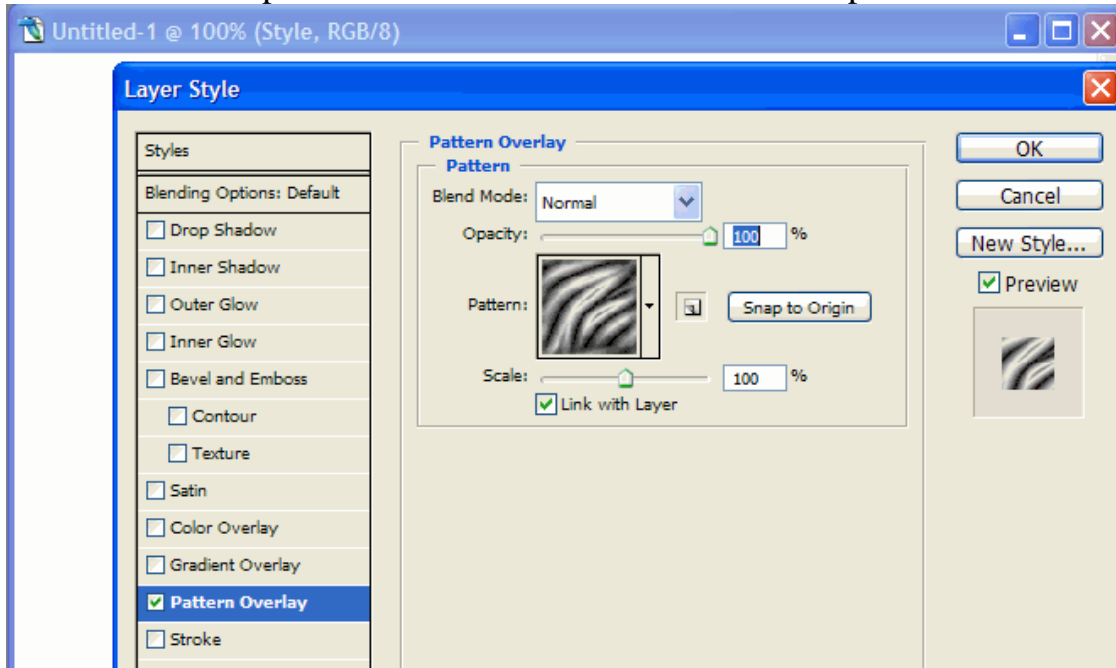


#### **Step 4**

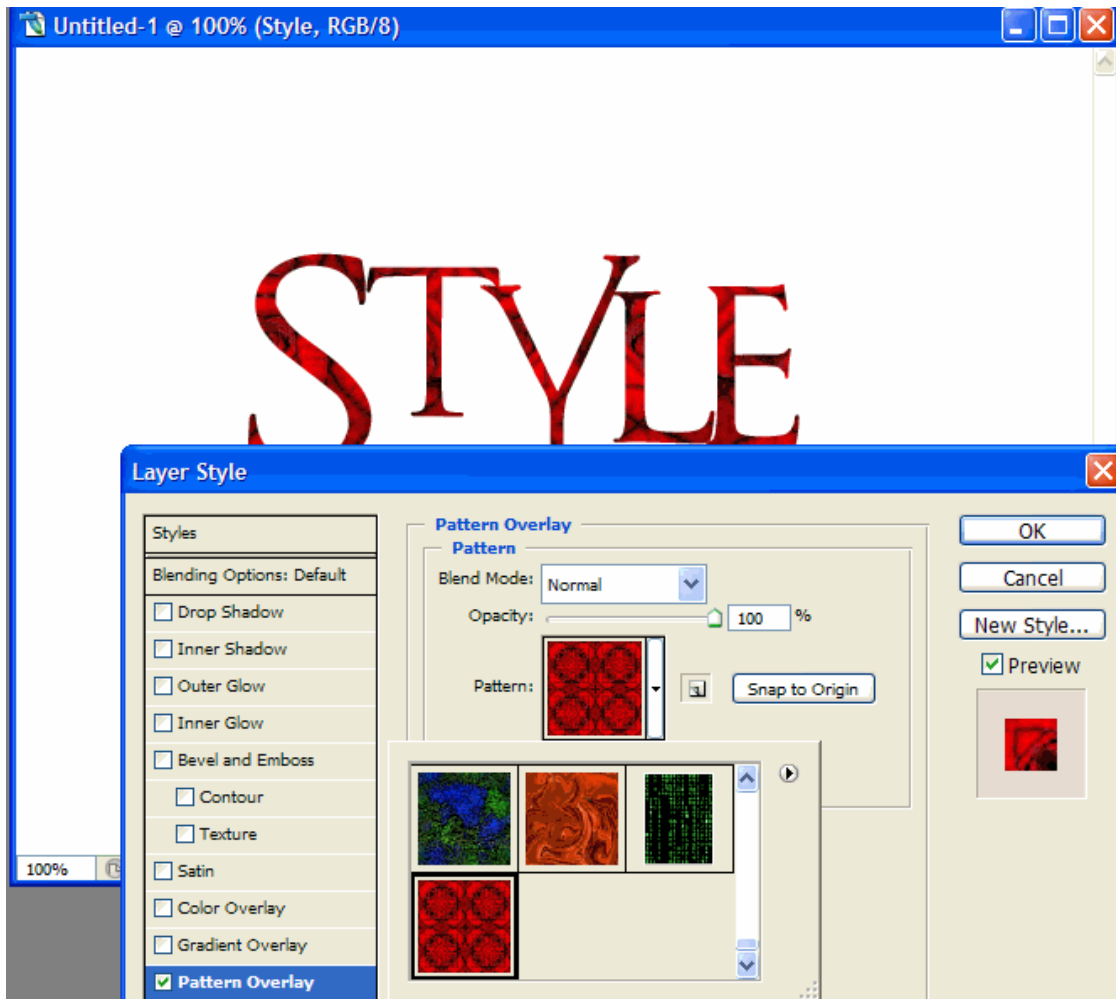
In this step we will begin to create the layer or text style. This is the fun part where you can play around with the settings to your hearts content until you get a style you're really happy with. Ok now you have selected your layer next go to the top of the page and click on the **Layer** tab. A drop down menu will appear, from that choose **Layer Style** and then **Pattern Overlay** as shown below.



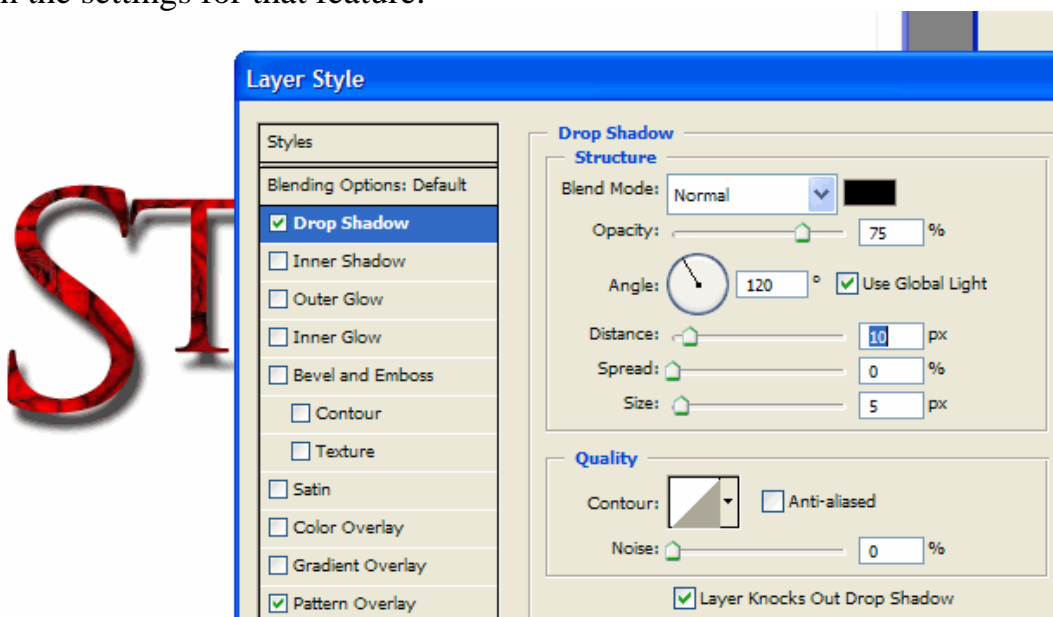
A new window will open that looks like the one shown in the picture underneath.



Click on the pattern window and then click on the pattern you created you will see it is immediately applied to the text on your image. Now you can start to make other changes to suit your taste and requirements.

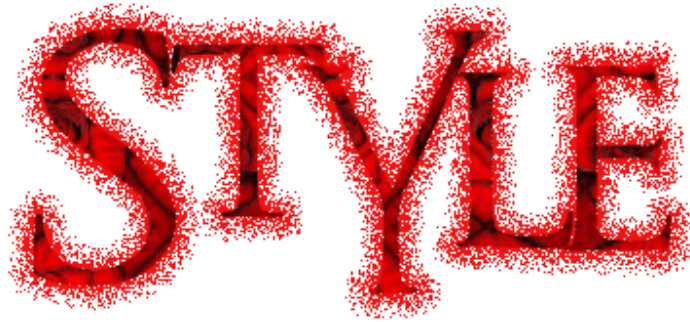


You can add a drop shadow to the style as you can see on the top left of the small window, simply tick the box next to **Drop Shadow** and then click on drop shadow to open the settings for that feature.



Play with the settings a little till you get an effect you like.

You can also select and deselect any of the other boxes on the list and click on the names to add different effects if you don't like an effect simply uncheck the box or return the settings back to how they were originally. Below are some examples using different settings. If you don't want to use a pattern you can deselect the pattern option and use a colour overlay or a gradient to fill you layer.



STYLE



STYLE



STYLE

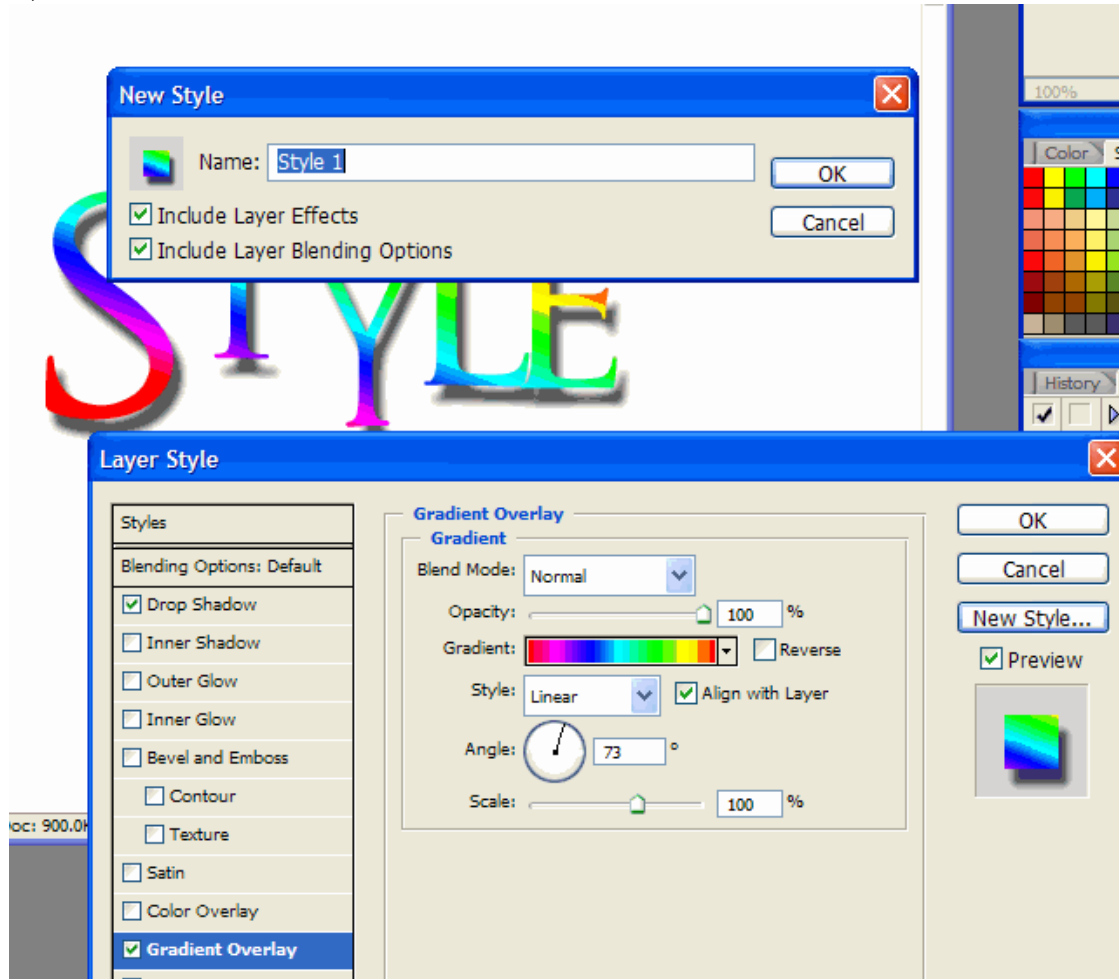


STYLE

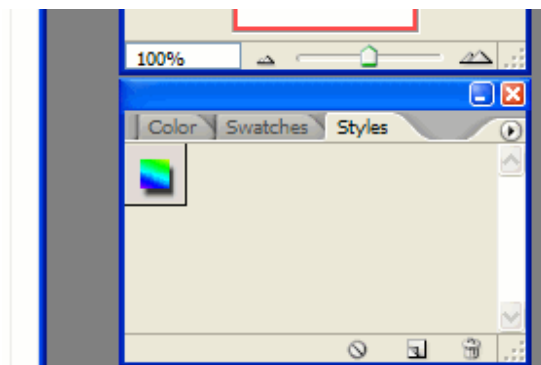
Just a few examples of playing with shadow and outer glow and gradients and stroke.

## Step 5

Finally when you achieve the style your happy with you will want to save it so select **New Style** which is on the top right hand side of the window and give your style a name, then click **OK** to confirm.

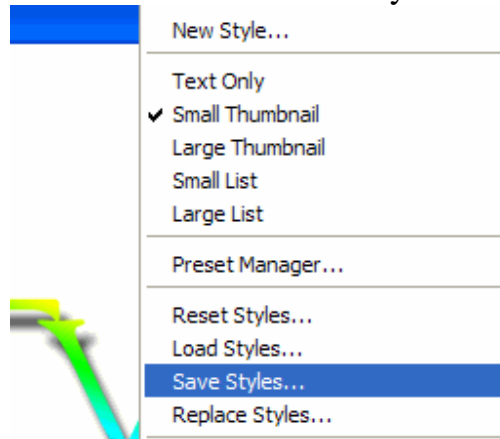


You will now be able to see your newly created styles in the small styles window as depicted below and you can select and use it from now on with any chosen layer or text.

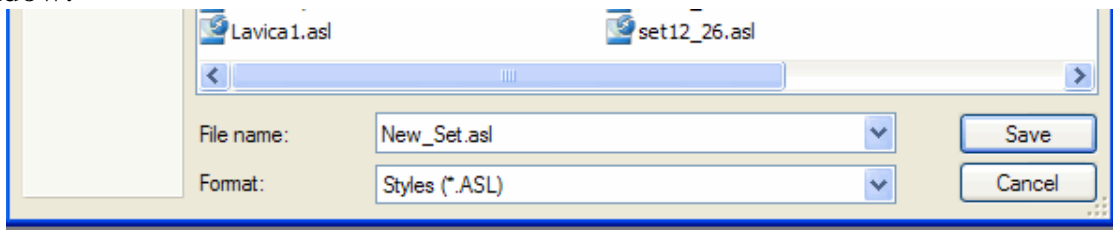


If you have any other styles in that window at the time of saving you can choose to save it to that set by clicking the tiny arrow in the top right hand corner of the styles window and selecting **Save Styles**. You can also delete the other styles in the window by right clicking on each individual style and selecting **Delete**. Don't worry

you won't lose those styles they just won't be in the new set you are creating, but they will still exist in your presets under their original name. Choose a name for your new set and save it. Now every time you make a new style you can add it to this set, but remember to save each time with the set name you created.



Above shows what to select on the drop down menu and below the shows the save window.



Layer styles can be used in many different ways on text and layers (but not on backgrounds). To apply a style to a layer – select the layer first by right clicking it and choosing its name from the list and then click on the style you want to apply to it – it's as simple as that.

I hope you enjoyed this tutorial on making easy styles and will have fun making lots of your own.

Lavica

If you would like me to make a signature or avatar for you or would like help with some other kind of graphic then mail me at:

[lavica.art@gmail.com](mailto:lavica.art@gmail.com)

and I'll do my best to help...